

Technical Protocol

Cat. No. K008

**Direct cloning-proficient
E. coli strain GB05-dir**

Version 1.0 (Nov. 2012)

CONTENTS

1	Direct cloning-proficient <i>E. coli</i> Strain GB05-dir	2
2	Experimental Outline	3
3	How Red/ET Recombination works	4
4	Technical protocol	5
4.1	<i>Generation of a vector backbone flanked by homology arms</i>	5
4.2	<i>Assembly of a linear DNA insert and a linear plasmid backbone</i>	6
4.3	<i>Verification of successfully modified plasmid by restriction analysis</i>	7
4.4	<i>Maps and sequences</i>	8
5	Troubleshooting	8
6	References and Patents	10
6.1	<i>References</i>	10
6.2	<i>Patents</i>	11
7	Purchaser Notification/Warranty	11
8	Other products available from Gene Bridges	12
9	DNA Engineering Services Available from Gene Bridges	133

Please read

The products listed in this manual are for research purposes only. They are not designed for diagnostic or therapeutic use in humans, animals or plants. Success depends on following the protocols exactly as they are described. Do read the trouble-shooting guide before beginning your experiments. Red/ET Recombination is the intellectual property of Gene Bridges GmbH.

Safety

Some chemical reagents used with this system are dangerous if handled carelessly. Take care when using chemical reagents (such as isopropanol and ethidium bromide) and electrical apparatus (high-voltage power supplies, gel electrophoresis and electroporation apparatus). Follow the manufacturer's safety recommendations.

1 Direct cloning-proficient *E. coli* Strain GB05-dir

Introduction

Red/ET recombination relies on homologous recombination *in vivo* in *E.coli* and allows a wide range of modifications on DNA molecules of any size and at any chosen position. Homologous recombination is the exchange of genetic material between two DNA molecules in a precise, specific and accurate manner. Homologous recombination occurs through homology regions, which are stretches of DNA shared by the two molecules that recombine. Because the sequence of the homology regions can be chosen freely, any position on a target molecule can be specifically altered. Red/ET recombination allows you to choose **homology arms as short as 50 bp** for homologous recombination, which can easily be added to a functional cassette by long PCR primers.

Full-length Rac prophage protein RecE and its partner RecT mediate highly efficient linear-to-linear homologous recombination mechanistically distinct from conventional recombineering mediated by Red $\alpha\beta$ from lambda phage (Fu et al. 2012).

E. coli strain GB05-dir harbours an arabinose inducible ETgA operon (full length *recE*, *recT*, *red γ* , and *recA*) at the *ybcC* locus. The strain was successfully used to directly clone gene clusters larger than 10 kb of secondary-metabolite pathways from *Photorhabdus luminescens*, a gram negative rod-shaped bacterium, into expression vectors (Fu et al. 2012).

Contents of the kit:

1. GB05-dir: Glycerol stock of recombineering proficient *E. coli* strain GB05-dir (500 μ l, 25% glycerol)
2. Linear control plasmid backbone: plasmid backbone containing a ColE1 origin of replication and an ampicillin resistance marker gene (100 ng/ μ l, 10 μ l)
3. Linear control insert (PCR product): linear DNA fragment consisting of a kanamycin resistance marker gene flanked by 50 bp long homology arms for recombination into the control backbone (100 ng/ μ l, 10 μ l)
4. This manual with protocols, maps and sequences

Please store tube 1 at -80°C, tubes 2 and 3 at -20° C.

2 Experimental Outline

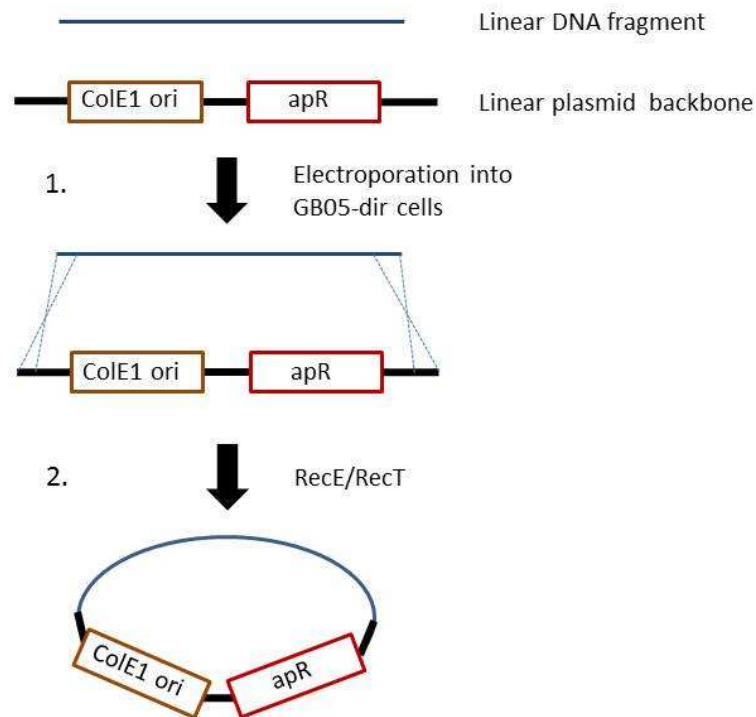


Figure 1: Direct cloning workflow.

- 1. Transform *E. coli* GB05-dir cells with a mixture of linear insert DNA and linear plasmid backbone.** For your convenience a linear plasmid backbone and a control insert (kanamycin resistance marker gene) sharing 50bp of terminal homology arms are provided for a control experiment.
- 2. Red/ET Recombination step.** The expression of *recE* and *recT* genes mediating Red/ET recombination is induced by the addition of L-arabinose. After induction, the cells are prepared for electroporation and both linear fragments are electroporated. Only colonies with circularized plasmid backbone will survive selection for ampicillin resistance. Subsequent DNA mini preparation is used to confirm the successful integration of the DNA fragment.

Clones obtained from the control experiment can easily be analyzed for the correct insertion of the control fragment by a growth control test. Only colonies carrying successfully modified plasmids will survive kanamycin plus ampicillin selection on the agar plates.

3 How Red/ET Recombination works

Target DNA molecules are precisely altered by homologous recombination in *E. coli* cells which express the phage-derived protein pairs, either RecE/RecT from the Rac prophage, or Red α /Red β from λ phage. These protein pairs are functionally and operationally similar. RecE and Red α are 5'-3' exonucleases, and RecT and Red β are DNA annealing proteins. A functional interaction between RecE and RecT, or between Red α and Red β is also required in order to catalyse the homologous recombination reaction. Recombination occurs through homology regions, which are stretches of DNA shared by the two molecules that recombine (Figure 2). The recombination is further assisted by λ -encoded Gam protein, which inhibits the RecBCD exonuclease activity of *E.coli*.

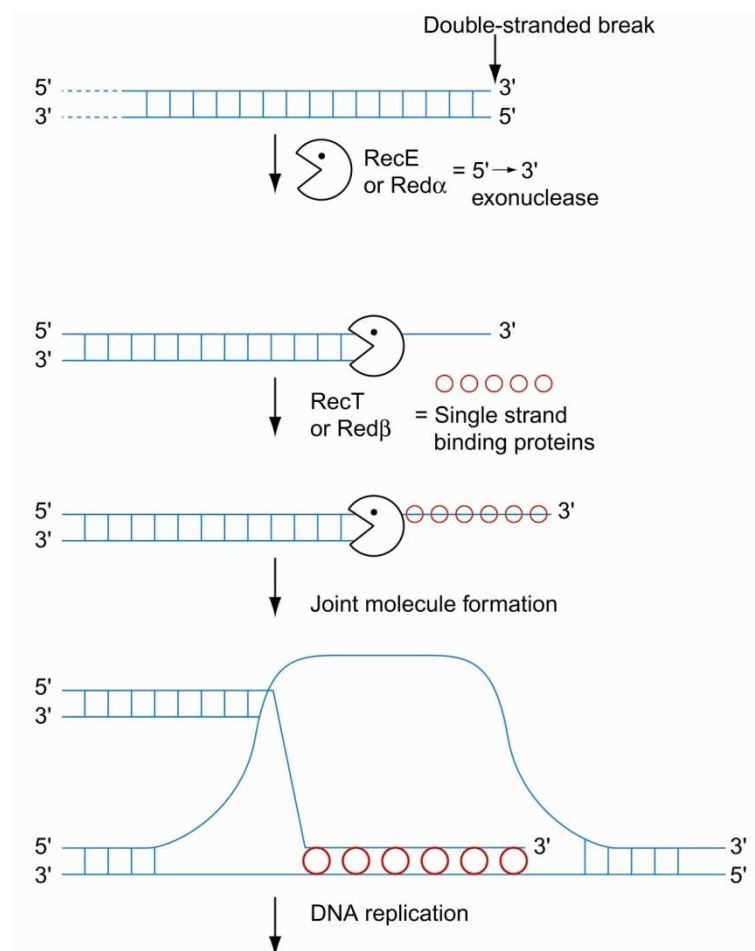


Figure 2: Mechanism of Red/ET Recombination.

Double-stranded break repair (DSBR) is initiated by the recombinase protein pairs, RecE/RecT or Red α /Red β .

First RecE (or Red α) digests one strand of the DNA from the double-stranded break, leaving the other strand as a 3' ended, single-stranded DNA overhang. Then RecT (or Red β) binds and coats the single strand. The protein-nucleic acid filament aligns with homologous DNA. Once aligned, the 3' end becomes a primer for DNA replication.

E. coli strain GB05-dir harbours an arabinose inducible ETyA operon (full length *recE*, *recT*, *red γ* , and *recA*) at the *ybcC* locus. The recombination window is therefore limited by the transient expression of the recombineering proteins. Thus, the risk of unwanted intra-molecular rearrangement is minimized.

4 Technical protocol

4.1 Generation of a vector backbone flanked by homology arms

Oligonucleotide design

- i. Choose 50 nucleotides at the 3' end of the fragment, which you want to subclone. Order an oligonucleotide with these 50 nucleotides at the 5' end. At the 3' end of this sequence add the primer sequence for amplification of your plasmid backbone.
- ii. Choose 50 nucleotides at the 5' end of the fragment, which you want to subclone and transfer them into the **reverse complement orientation**. Order an oligonucleotide with this sequence at the 5' end. At the 3' end of this sequence add the primer sequence for amplification of your plasmid backbone.

PCR

The oligonucleotides are suspended in dH₂O at a final concentration of 10 pmol/ μ L. A standard PCR protocol is given below.

PCR reaction (in 50 μ l)

38.5 μ l	dH ₂ O
5.0 μ l	10 x PCR reaction buffer
2.0 μ l	5 mM dNTP
1.0 μ l	upper oligonucleotide
1.0 μ l	lower oligonucleotide
1.0 μ l	PCR-template
0.5 μ l	Taq polymerase (5 U/ μ l)

- An annealing temperature of 57°- 62°C is optimal.
- Thirty cycles; 1' 95°; 1' 57°-62° C; 2.5' 72° C

4.2 Assembly of a linear DNA insert and a linear plasmid backbone

In the next step, prepare electro-competent cells from strain GB05-dir, shortly after inducing the expression of the recombination proteins.

In advance, prepare the linear DNA fragment and the plasmid backbone with homology arms. Use tube 2 (control plasmid backbone) and tube 3 (control PCR product) to perform a control experiment in parallel.

1. Inoculate 1.0 ml LB medium without addition of antibiotics with GB05-dir and incubate the culture over night at 37°C.
2. Before starting the next day:
 - Chill ddH₂O (or 10% glycerol) on ice for at least 2 h.
 - Chill electroporation cuvettes (1 mm gap).
 - Cool benchtop centrifuge to 2°C.

Set up 4 lid-punctured microfuge tubes (2 for your own experiment and 2 for control experiment) containing 1.4 ml each of fresh LB medium and inoculate two of them with 30 µl fresh overnight culture for your experiment, the other two with 30 µl of the overnight culture from the control experiment. Incubate the tubes at 37°C for 1,5 h shaking at 1100 rpm until O D₆₀₀ ~ 0.3.

3. Add 50 µl 10% L-arabinose to one of the tubes for your own experiment and to one of the control tubes, giving a final concentration of 0.3%-0.4%. This will induce the expression of the Red/ET Recombination proteins. Do not use D-arabinose. Leave the other tubes without induction as negative controls. Incubate all at 37°C, shaking for 35 minutes.

Remark: Prepare a 10% **L-arabinose** (Sigma A-3256) stock solution (in ddH₂O), and use it fresh or frozen in small aliquots at -20°C. Frozen aliquots should not undergo more than three freeze-thaw cycles.

4. Prepare the cells for electroporation: Centrifuge for 30 sec at 11,000 rpm in a cooled microfuge benchtop centrifuge (at 2°C). Discard the supernatant by quickly tipping it out twice, and place the pellet on ice. Resuspend the pellet with 1 ml chilled ddH₂O (or 10% glycerol), pipetting up and down three times to mix the suspension. Repeat the centrifugation and resuspend the cells again. Centrifuge and tip out the supernatant once more; 20 to 30 µl will be left in the tube with the pellet. Keep the tube on ice.
5. Add 100 ng of the linear fragment and 100 ng of the linear plasmid backbone to each of the two microfuge tubes (induced and uninduced), and pipette the mixture into the chilled electroporation cuvette. In parallel, pipette 1 µl from tube 2 and 3 into each of the two tubes of the control.
6. Electroporate at 1350 V, 10 µF, 600 Ohms. This setting applies to an Eppendorf® Electroporator 2510 using an electroporation cuvette with a slit of

1 mm. Other devices can be used, but 1350 V and a 5 ms pulse are recommended.

7. Add 1 ml LB medium without antibiotics to the cuvette. Mix the cells carefully by pipetting up and down and pipette back into the microfuge tube. Incubate the cultures at 37°C with shaking for about 90 min. Recombination will now occur.
8. Streak the cultures with a loop onto LB agar plates containing the appropriate antibiotics for the plasmid [e.g. ampicillin (100 µg/ml) for the control]. You should obtain >100 colonies and the ratio of induced : uninduced bacterial colonies should exceed 10:1.

More than 95% of all colonies growing on the agar plates conditioned with the appropriate antibiotics will have successfully recombined copies of the plasmid. Please note that although most ampicillin-resistant colonies will contain the correct plasmid recombinant, in rare cases it is possible that secondary recombination, usually deletions between internal repeats in the plasmid, can also occur.

To confirm the correct recombination event, pick 10 – 20 colonies from your experiment and 2 from the control reaction, isolate plasmid DNA and analyze the DNA by restriction digestion.

4.3 Verification of successfully modified plasmid by restriction analysis

Analyze an aliquot of your plasmid DNA by restriction digestion. For the control experiment, the restriction pattern after *EcoRV* digestion is 2641bp + 1741bp (Figure 3).

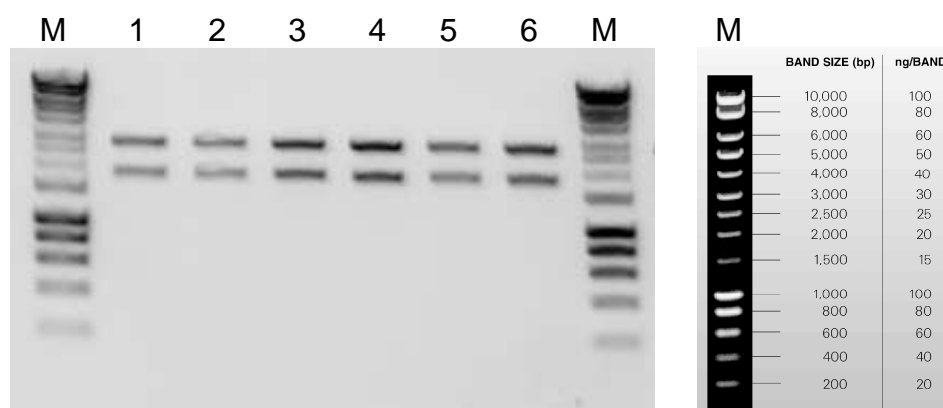


Figure 3: Restriction analysis of 6 clones obtained from the control reaction (lanes 1-6) after *EcoRV* digestion. *M*: Hyperladder I (Bioline).

4.4 Maps and sequences

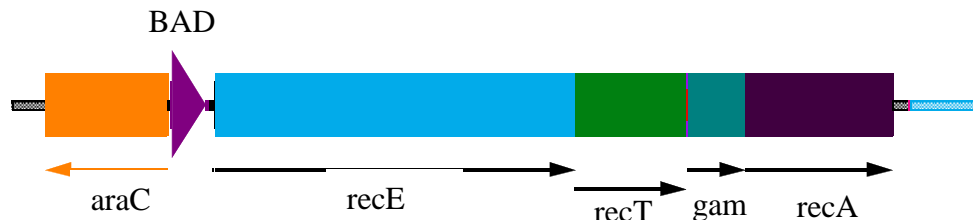


Figure 4: Diagram of the arabinose inducible ETγA operon (full length *recE*, *recT*, *recA*, and *gam*) inserted at the *ybcC* locus.

5 Troubleshooting

Problems with the recombination reaction can be caused by a number of different factors. Please review the information below to troubleshoot your experiments.

We highly recommend performing a positive control experiment using the components provided in the kit.

For homologous recombination the two DNA molecules must share two regions of perfect sequence identity. Wrong nucleotides in the homology region can completely abolish recombination. Since oligonucleotides are used to add the homology regions they have to be synthesized properly and be of excellent quality. Take into account that long oligonucleotides (especially if they are longer than 80bp) require additional purification steps, such as HPLC. Also note that the electronic sequences provided from databases may not be 100% correct.

If you are trying to target a repeated sequence in your BAC or plasmid, you may experience problems because the homology region at the end of the linear fragment can target more than one site.

Observation:

No colonies on your plate after Red/ET Recombination:

If you do not obtain any colonies after recombination, the following parameters should be checked:

1) The linear DNA fragments/PCR products:

- could be wrong (check it by restriction digest or sequencing)
- could be degraded (check an aliquot on an agarose gel)
- could have incorrect homology arms (if possible verify the correct homology arms by sequencing)

2) The Red/ET reaction did not take place because

- no or the wrong type of arabinose was used for induction (please make sure you use L-arabinose!)
- in very rare cases increasing the time for recombination from 70 min (incubation after electroporation) to up to four hours is necessary for successful recombination.

3) Problems with and after the electroporation:

- cells are not competent enough to take up the linear DNA. Please make sure that the cells were kept on ice and that the water (or 10% glycerol) is sufficiently cold. Linear DNA has been shown to be about 10^4 -fold less active than DNA transformed in circular form (Eppendorf Operation Manual Electroporator 2510 version 1.0). Make sure that the time constant is around 5 ms.
- make sure that there is no arching during the electroporation process.
- make sure that after electroporation the cells are plated on the appropriate concentration of antibiotics depending on the copy number of the plasmid or BAC.

Similar number of colonies on both plates, the induced and the uninduced one:

A similar number of colonies on both plates (induced and uninduced one) indicates that there are still traces of the circular (or supercoiled) plasmid used for preparing the linear plasmid backbone left in the sample. Since the transformation efficiency of linear fragments is 10^4 -fold less than that of circular DNA molecules you may obtain a background even if no traces were visible on an agarose gel.

If the linear DNA fragment was obtained by restriction digestion, use less DNA and gel purify the fragment! If the linear fragment was obtained by PCR, set up a *DpnI* digest for your PCR product and gel purify it at the end!

6 References and Patents

6.1 References

- Zhang, Y., Buchholz, F., Muyrers, J.P.P., and Stewart, A.F. A new logic for DNA engineering using recombination in *Escherichia coli*. *Nature Genetics* 20, 123-128 (1998).
- Angrand P.O., Daigle N., van der Hoeven, F., Scholer, H.R. and Stewart, A.F. Simplified generation of targeting constructs using ET recombination. *Nucleic Acids Res* 27, e16 (1999).
- Muyrers, J.P.P., Zhang, Y., Testa, G. and Stewart, A.F. Rapid modification of bacterial artificial chromosomes by ET-recombination. *Nucleic Acids Res.* 27, 1555-1557 (1999).
- Muyrers, J.P.P., Zhang, Y., Buchholz, F. and Stewart, A.F. RecE/RecT and Red α /Red β initiate double-stranded break repair by specifically interacting with their respective partners. *Genes Dev* 14, 1971-1982 (2000).
- Muyrers, J.P.P., Zhang, Y., Benes V., Testa, G., Ansorge, W. and Stewart, A.F. Point mutation of bacterial artificial chromosomes by ET recombination. *EMBO Reports* 1, 239-243 (2000).
- Zhang, Y., Muyrers, J.P.P., Testa, G. and Stewart, A.F. DNA cloning by homologous recombination in *Escherichia coli*. *Nature Biotech.* 18, 1314-1317 (2000).
- Muyrers, J.P.P., Zhang, Y. and Stewart, A.F. Recombinogenic engineering: new options for cloning and manipulating DNA. *Trends in Bioch. Sci.* 26, 325-31 (2001).
- Fu, J., Bian, X., Hu, S., Wang, H., Huang, F., Seibert, P.M., Plaza, A., Xia, L., Müller, R., Stewart, A.F. and Zhang, Y. Full-length RecE enhances linear-linear homologous recombination and facilitates direct cloning for bioprospecting. *Nature biotechnology.* 30, 440-448 (2012).

6.2 Patents

Red/ET recombination is covered by one or several of the following patents, patent applications and related ones:

- Stewart, A.F., Zhang, Y., and Buchholz, F. 1998. Novel DNA cloning method relying on the E. coli RecE/RecT recombination system. *European Patent No.1034260; United States Patent No 6509156.*
- Stewart, A.F., Zhang, Y., and Muyrers, J.P.P. 1999. Methods and compositions for directed cloning and subcloning using homologous recombination. *European Patent No.1204740; United States Patent No. 6355412.*
- Zhang, Y., Fu, J., and Stewart, A.F. 2011. Direct Cloning. WO2011/154927

These patents and patent applications are owned by Gene Bridges, or owned by the EMBL and exclusively licensed to Gene Bridges.

7 Purchaser Notification/Warranty

The purchase of this product conveys to the purchaser the non-transferable right to use this product for research purposes only. The purchaser cannot sell or otherwise transfer this product or its components to a third party. No rights are conveyed to the purchaser to use this product or its components for a commercial purpose. Commercial purposes shall include any activity for which a party receives consideration of any kind. These may include, but are not limited to, use of the product or its components in manufacturing, to provide a service, information or data, use of the product for diagnostic purposes, or re-sale of the product or its components for any purpose, commercial or otherwise.

Limited Warranty

Gene Bridges is committed to providing customers with high-quality goods and services. Gene Bridges assumes no responsibility or liability for any special, indirect, incidental or consequential loss or damage whatsoever. This warranty limits Gene Bridges GmbH's liability only to the cost of the product.

8 Other products available from Gene Bridges

General information

- Kits are available for non-commercial research organizations. Commercial companies or for-profit organizations require a sub-license to use Red/ET Recombination.

The complete product list as well as all information about how to order kits in your country is given on our website: www.genebridges.com

Additional Kits:

- K001: Quick and Easy BAC Modification Kit
- K002: Counter-Selection BAC Modification Kit
- K003: BAC Subcloning Kit
- K004: Quick and Easy Conditional Knockout Kit (FRT/FLPe)
- K005: Quick and Easy Conditional Knockout Kit (loxP/Cre)
- K006: Quick and Easy *E. coli* Gene Deletion Kit
- K009: Recombineering-proficient *E. coli* strain GB08-red

Additional functional cassettes:

- A001: Pro- and Eukaryotic Neomycin Selection Cassette (PGK-gb2-neo)
- A002: FRT flanked, Pro- and Eukaryotic Neomycin Selection Cassette (FRT-PGK-gb2-neo-FRT)
- A003: loxP flanked, Pro- and Eukaryotic Neomycin Selection Cassette (loxP-PGK-gb2-neo-loxP)
- A004: FRT flanked, Pro- and Eukaryotic Neomycin Selection Cassette plus loxP site (FRT-PGK-gb2-neo-FRT-loxP)
- A005: FRT flanked, Pro- and Eukaryotic Neomycin Selection Cassette plus loxP site 2nd version (loxP-FRT-PGK-gb2-neo-FRT)
- A006: FRT flanked Chloramphenicol Selection Cassette (FRT-cm-FRT)
- A007: loxP flanked Chloramphenicol Selection Cassette (loxP-cm-loxP)
- A008: FRT flanked Ampicillin Selection Cassette (FRT-amp-FRT)
- A009: loxP flanked Ampicillin Selection Cassette (loxP-amp-loxP)
- A010: FRT flanked, Pro- and Eukaryotic Hygromycin Selection Cassette (FRT-PGK-gb2-hygro-FRT)

- A011: loxP flanked, Pro- and Eukaryotic Hygromycin Selection Cassette (loxP-PGK-gb2-hygro-loxP)
- A012: FRT flanked, Pro- and Eukaryotic Neomycin Selection Cassette with attached codon improved Cre (iCre-FRT-PGK-gb2-neo-FRT)

Additional strains and plasmids:

- A104: Enhanced FLP Expression Plasmid 707-FLPe with tetracycline (tet) resistance marker for use in *E. coli* only
- A105: Enhanced FLP Expression Plasmid 708-FLPe with chloramphenicol (cm) resistance marker for use in *E. coli* only
- A106: Enhanced FLP Expression Plasmid 709-FLPe with ampicillin (ap) resistance marker for use in *E. coli* only
- A107: Enhanced FLP Expression Plasmid 710-FLPe with kanamycin (km) resistance marker for use in *E. coli* only
- A112: Cre Expression Plasmid: 705-Cre (cm resistance marker)
- A113: Cre Expression Plasmid: 706-Cre (tet resistance marker)
- A201: Enhanced Eukaryotic FLP Expression Plasmid: pCAGGS-FLPe

9 DNA Engineering Services Available from Gene Bridges

Instead of performing your own DNA manipulations, let the Gene Bridges DNA Engineering Service Team do the work for you. We work for many commercial and research organizations across the world to provide DNA modifications in low- or high-copy plasmids, cosmids, BACs and the *E. coli* chromosome.

Contact our DNA Engineering Service by email at contact@genebridges.com for details and prices.

Gene Bridges GmbH

Commercial Centre

Im Neuenheimer Feld 584

69120 Heidelberg

Tel. +49 (0)6221-13 70 811

Fax +49 (0)6221-13 70 829

products@Genebridges.com

www.genebridges.com